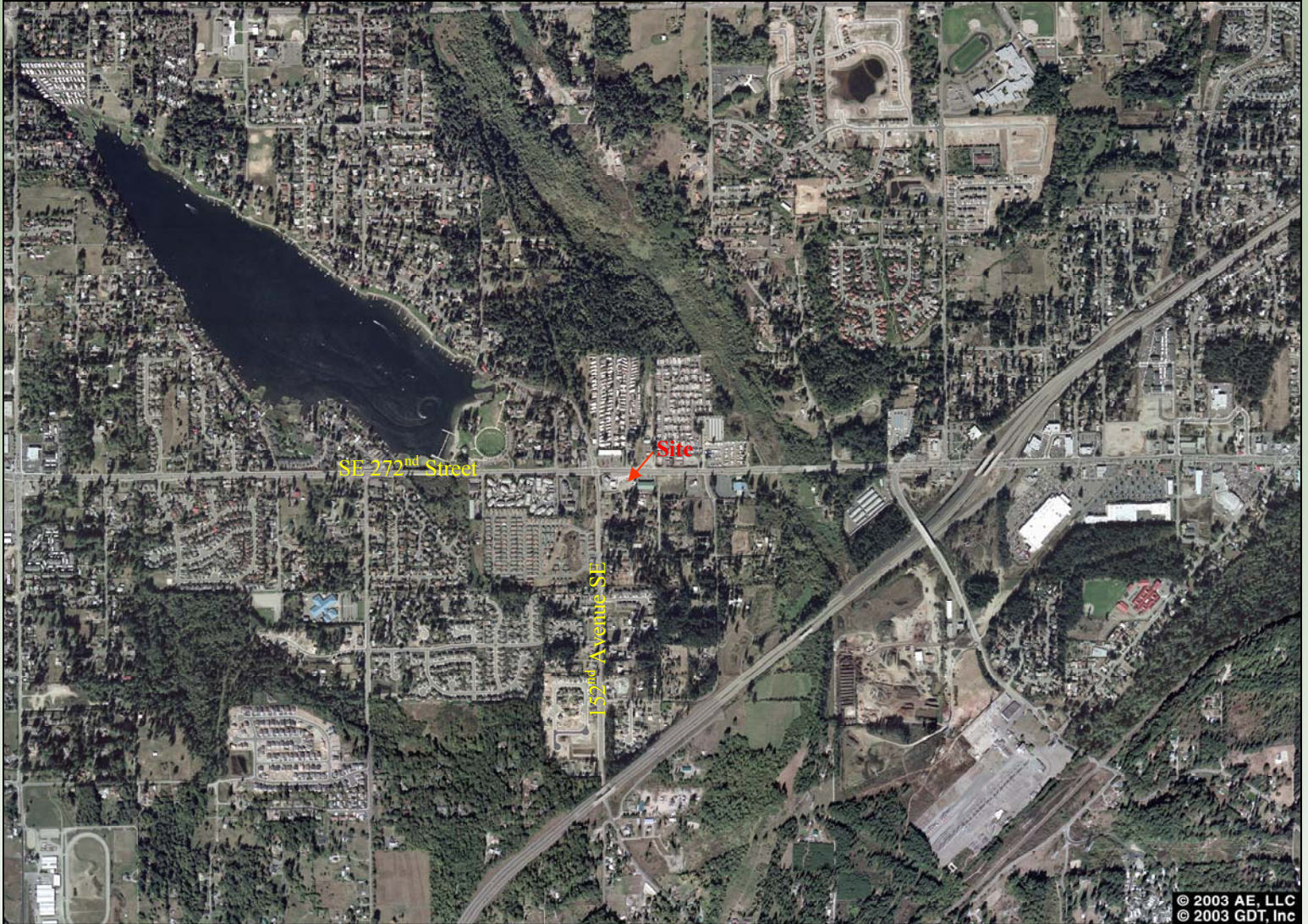
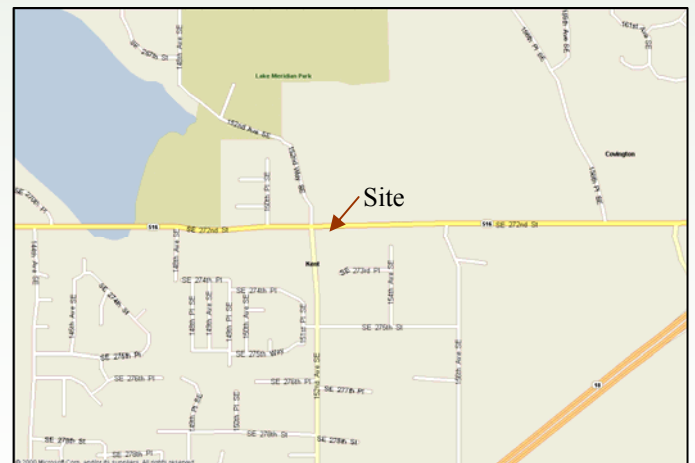


Ideal DAYCARE Build to Suit For Lease



8,750 SF building on approximately 51,000 SF site
SE 272nd Street & 152nd Avenue SE, Kent, WA 98042

- New 21,000 SF professional building to be finished Fall 2006 next door
- Excellent access from two major streets
- Long term lease available
- \$18.00/SF/year NNN



BRIAN S. POUNDER
REGENCY GROUP, INC.
11711 SE 8TH Street, Suite 310
Bellevue, WA 98005
425.990.3463
BP@RegencyGroupInc.com



